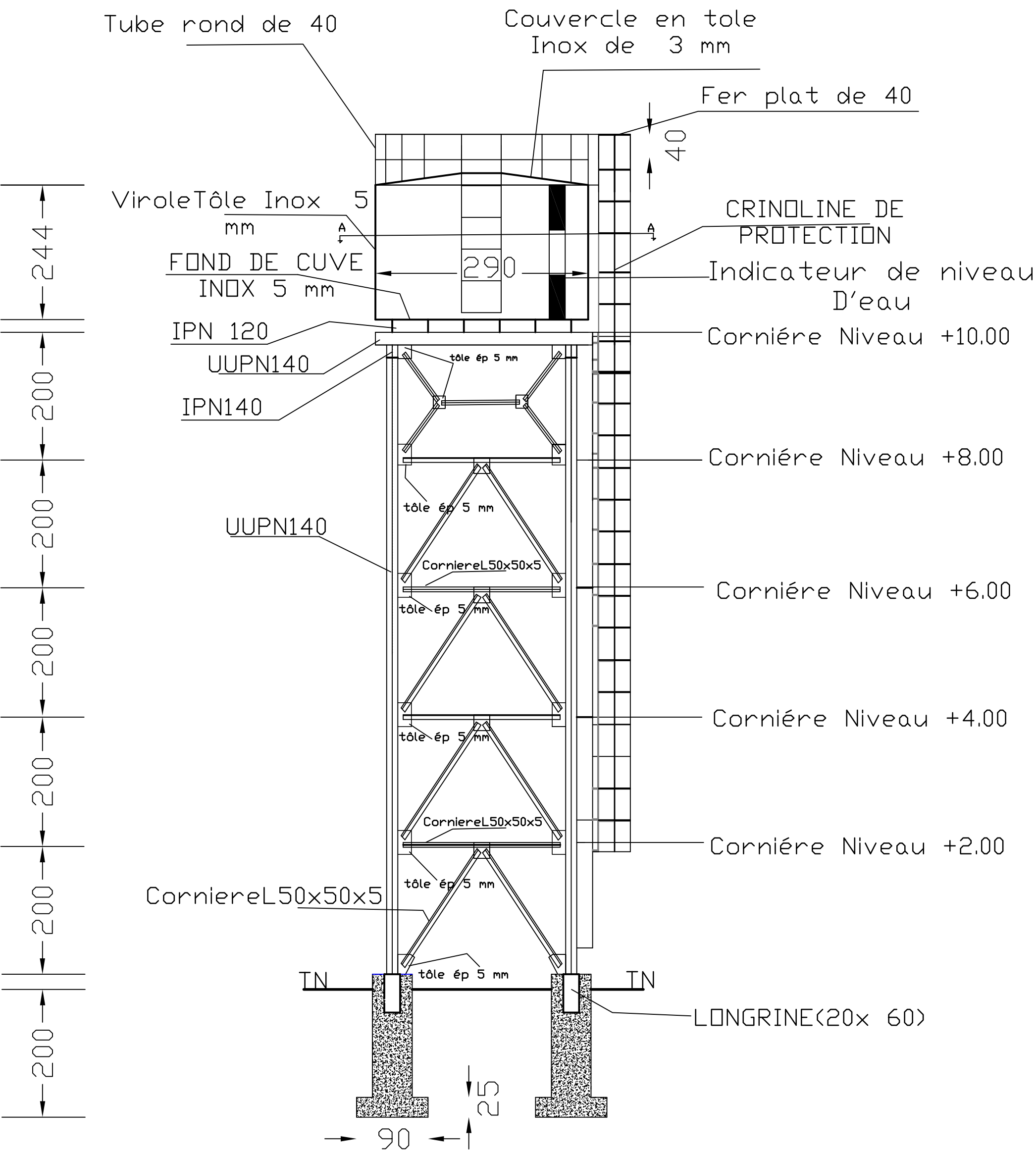



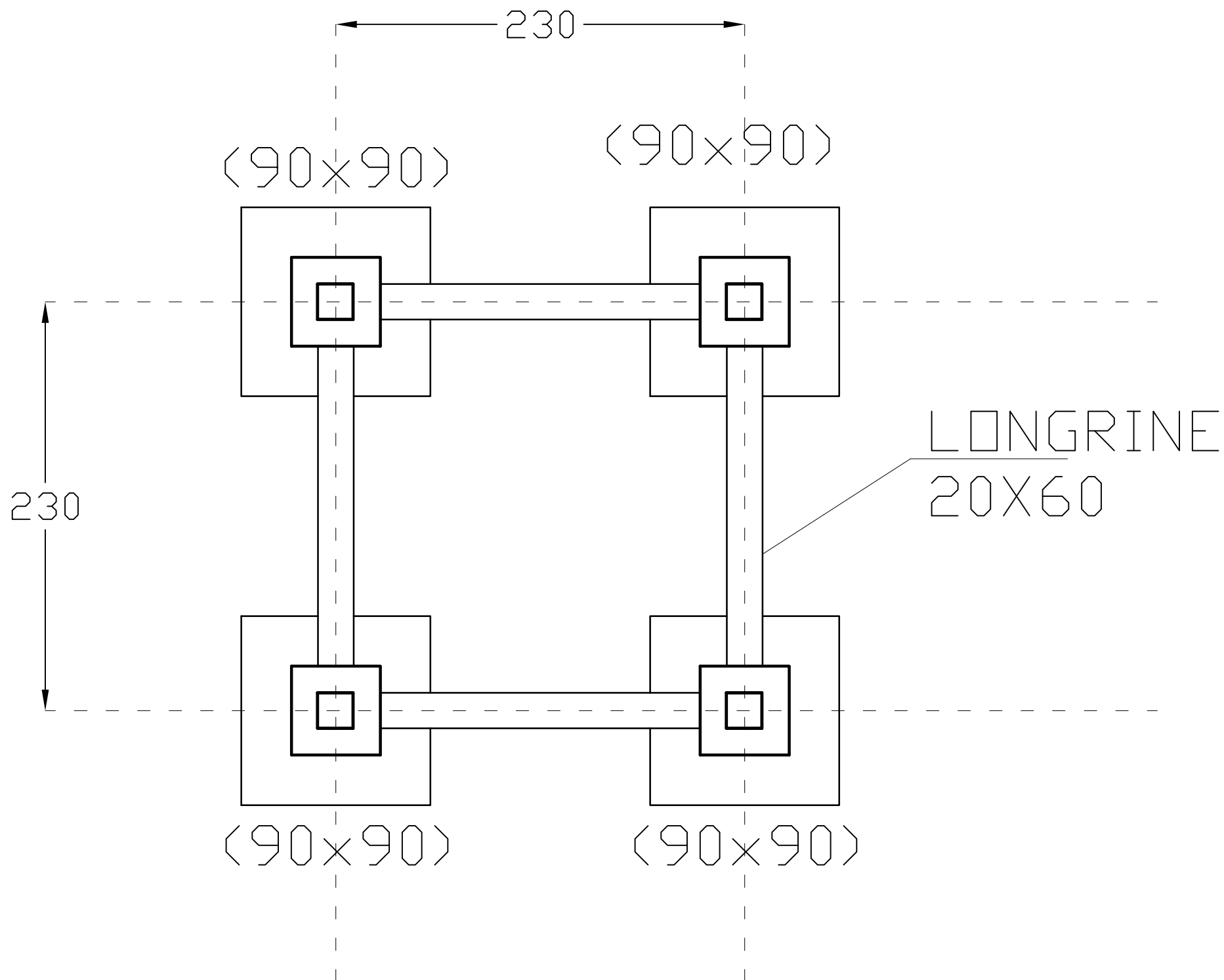


CHATEAU DE 15m3 10 m






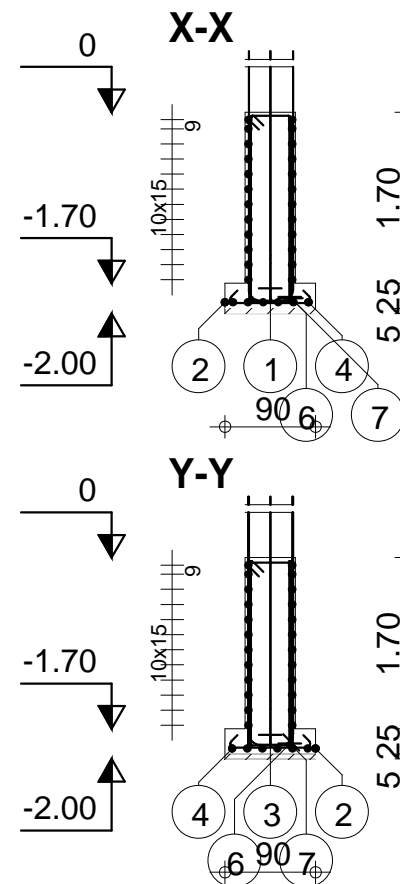
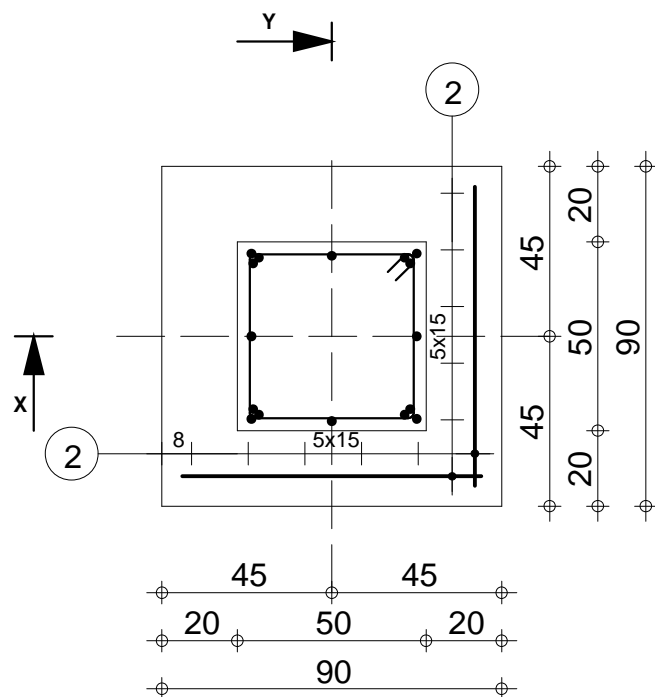
plan d'élévation château


MAITRE D'OUVRAGE ENABEL-ASYPON GMV	FINANCEMENT Union Européenne	MAITRE D'OEUVRE BUREAU ESI	TRAVAUX DE REALISATION D'UN BOIS VILLAGE A BOLHI DANS LA COMMUNE SIMIRI	
			ECHELLE:	PHASE:APD
			PLAN D'ELEVATION CHATEAU	
			JUILLET 2025	

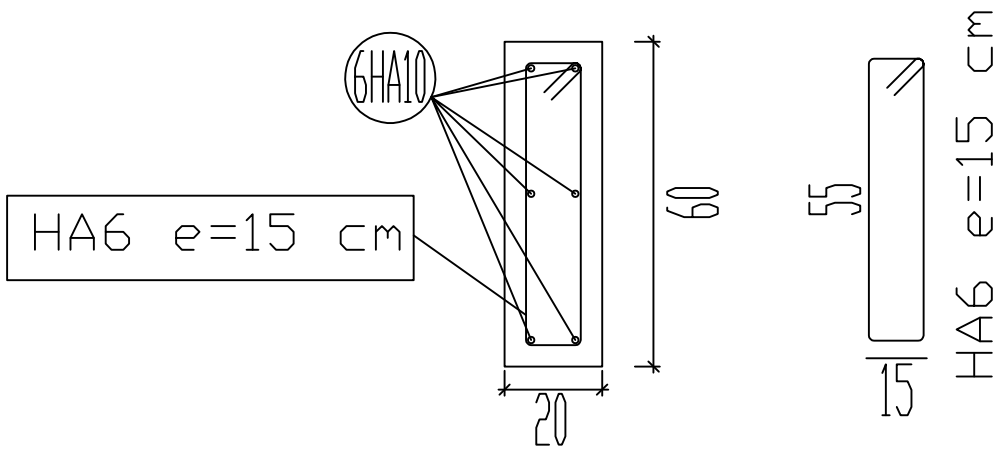


plan d'implantation

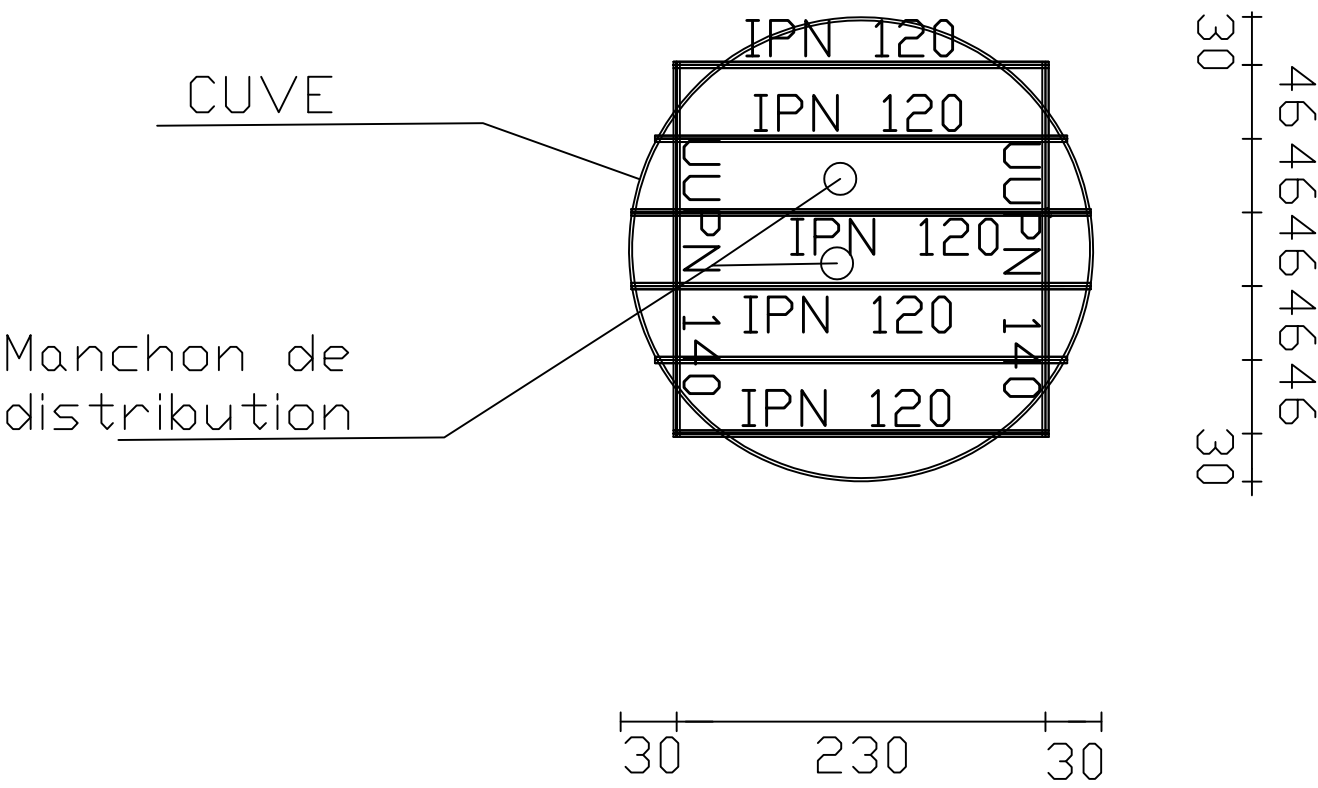
MAITRE D'OUVRAGE ENABEL-ASYPON GMV	FINANCEMENT Union Européenne	MAITRE D'OEUVRE BUREAU ESI	TRAVAUX DE REALISATION D'UN BOIS VILLAGE A BOLHI DANS LA COMMUNE SIMIRI	
			ECHELLE:	PHASE:APD
			PLAN D'IMPLANTATION	JUILLET 2025






Pos.	Armature	Code	Forme	Pos.	Armature	Code	Forme	Pos.	Armature	Code	Forme
①	1HA 12	l=5.27	21	④	12HA 8	l=1.06	00	⑦	2HA 12	l=4.80	31
②	2HA 8	l=1.07	00	⑤	12HA 6	l=1.88	31				
③	3HA 12	l=5.30	21	⑥	2HA 12	l=4.75	31				
Tél. Fax								Acier HA 400 = 24.6 kg Acier HA 400 = 22 kg Enrobage c1 = 5 cm, c2 = 3 cm		Echelle pour la vue 1/20	
Fissuration peu préjudiciable											
<div></div> <div>Niveau -2,00</div> <div>Château 15 m3 - 10 m</div>				<div>Semelle ISOLEE SIMIRI</div> <div>Nombre 1</div>				Béton : BETON = 0.628 m3		Page 1/1	
								Surface du coffrage = 4.3 m2 Densité = 74.2 kg/ m3			



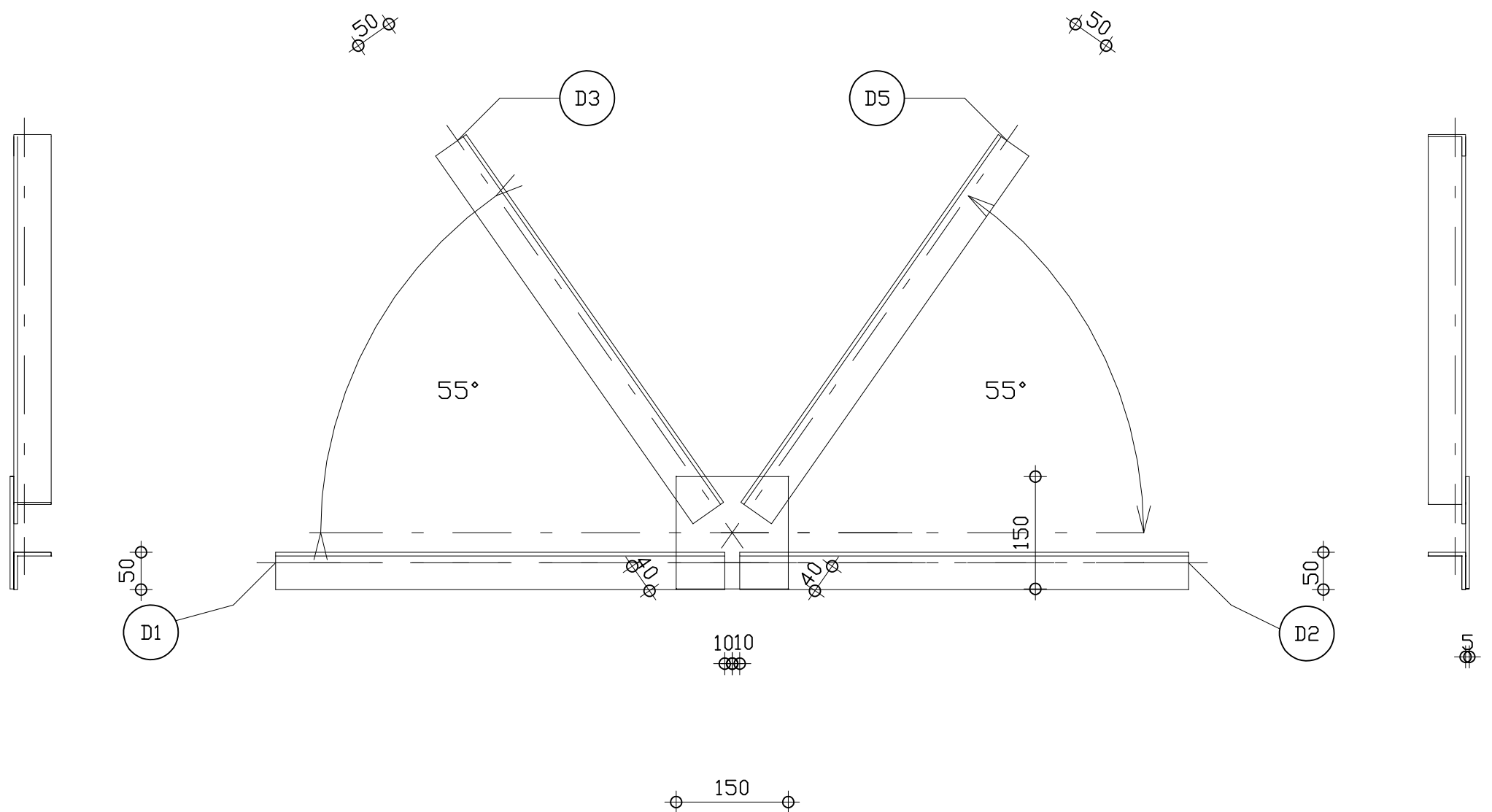
Détail longrine



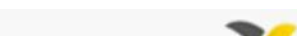


Detail coup AA

MAITRE D'OUVRAGE	FINANCEMENT	MAITRE D'OEUVRE	TRAVAUX DE REALISATION D’UN BOIS VILLAGE A BOLHI DANS LA COMMUNE SIMIRI	
ENABEL-ASYPON GMV	Union Européenne	BUREAU ESI	ECHELLE:	PHASE:APD
			DETAILS COUPE A-A ET LONGRINE	JUILLET 2025

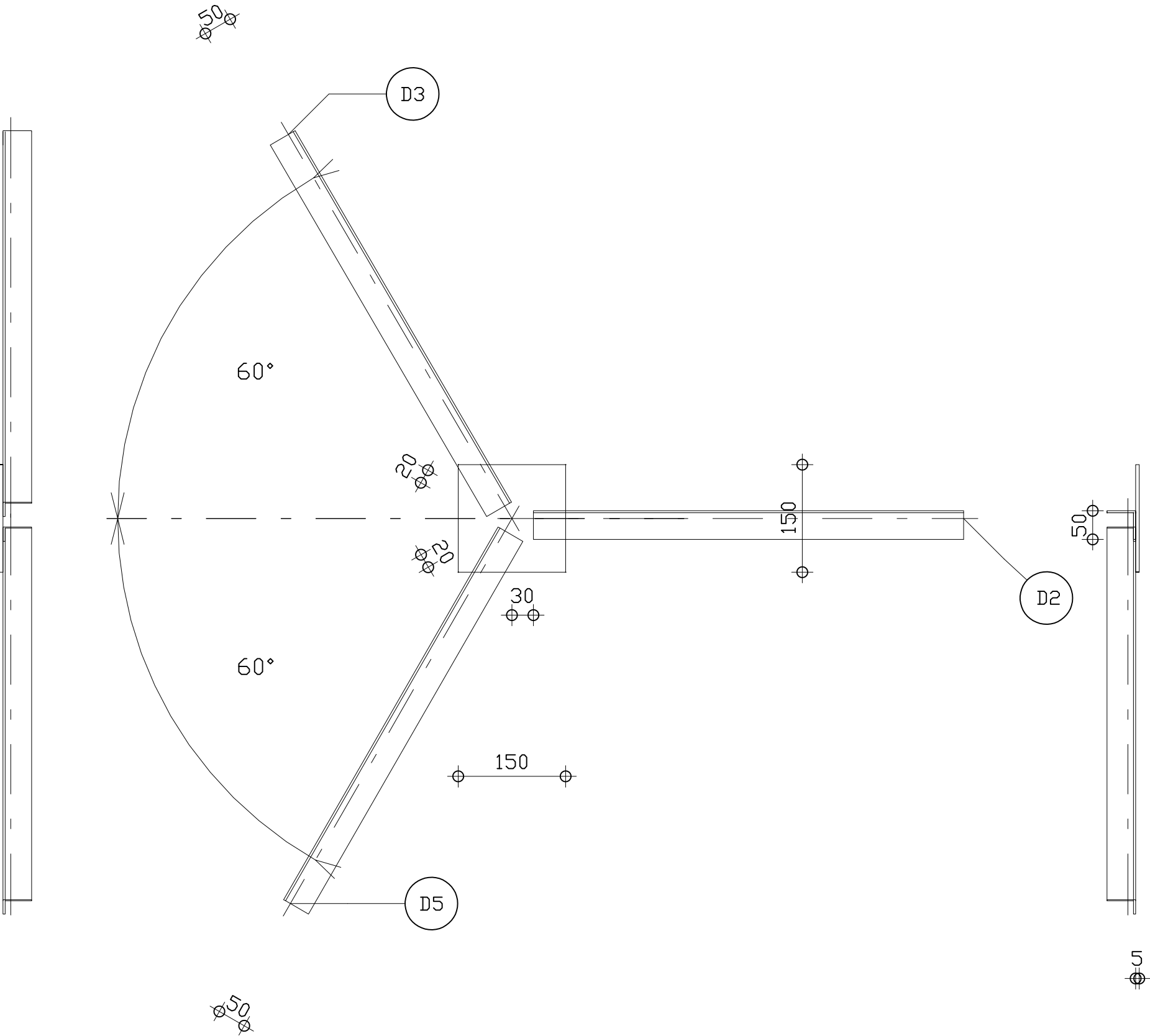
D5 - CAE 50x5






ASSEMBLAGE N°1

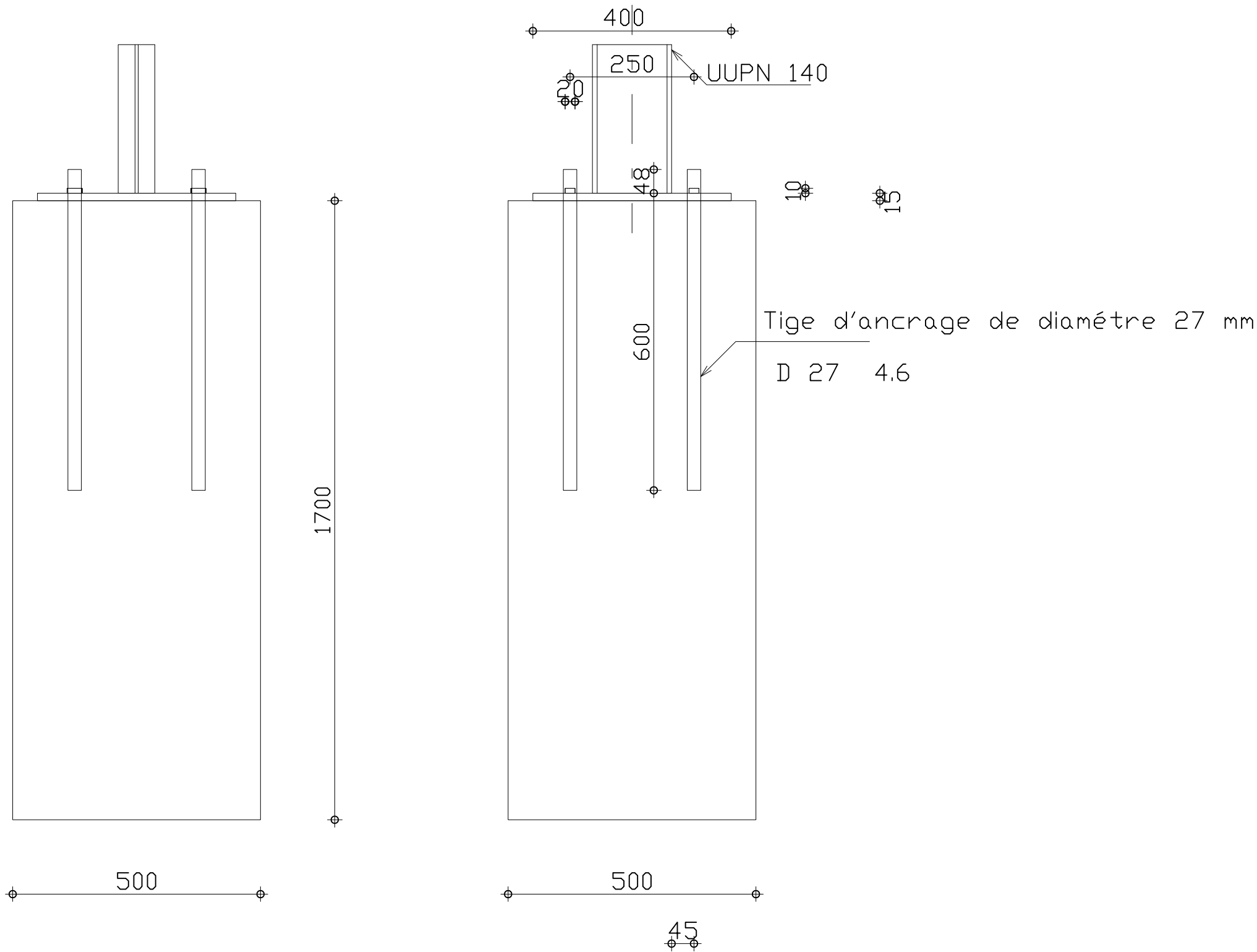
MAITRE D'OUVRAGE	FINANCEMENT	MAITRE D'OEUVRE	TRAVAUX DE REALISATION D'UN BOIS VILLAGE A BOLHI DANS LA COMMUNE SIMIRI	
ENABEL-ASYPON GMV	Union Européenne	BUREAU ESI		
			ECHELLE:	PHASE:APD
			ASSEMBLAGE N°1	JUILLET 2025

- D2 - CAE 50x5
- D3 - CAE 50x5
- D5 - CAE 50x5






ASSEMBLAGE N°2

MAITRE D'OUVRAGE	FINANCEMENT	MAITRE D'OEUVRE	TRAVAUX DE REALISATION D'UN BOIS VILLAGE A BOLHI DANS LA COMMUNE SIMIRI	
ENABEL-ASYPON GMV	Union Européenne	BUREAU ESI		
			ECHELLE:	PHASE:APD
			ASSEMBLAGE N°2	JUILLET 2025



DETAIL L DE FIXATION-POTEAU-PLATINE

MAITRE D'OUVRAGE ENABEL-ASYPON GMV	FINANCEMENT Union Européenne	MAITRE D'OEUVRE BUREAU ESI	TRAVAUX DE REALISATION D'UN BOIS VILLAGE A BOLHI DANS LA COMMUNE SIMIRI	
			ECHELLE:	PHASE:APD
			ASSEMBLAGE N°3	JUILLET 2025